

pIMAGO®-biotin Phosphoprotein Detection Kit
For Western Blot
Fluor 680-based detection



Store at 4°C

Cat. # 802-10
1 Kit
(10 mini-blots)

Orders: ► order@tymora-analytical.com
Support: ► customersupport@tymora-analytical.com
765-490-6834
Web: ► www.tymora-analytical.com

This product is for *in vitro* research use only and is not intended for use in humans or animals.

Introduction.

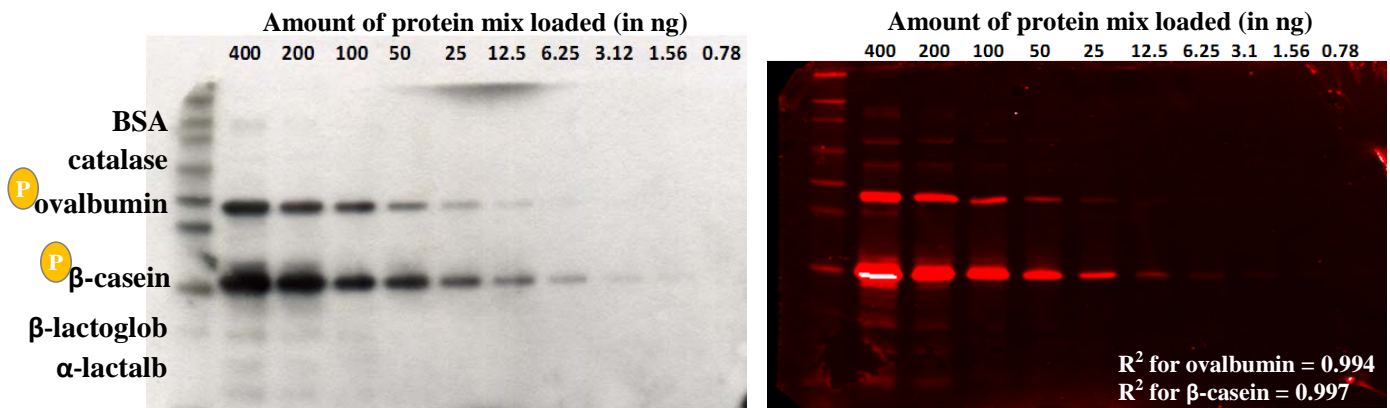
pIMAGO is a universal phosphoprotein detection technology that enables sensitive and specific recognition of phosphorylated molecules. Unlike phospho-antibodies, the binding is not biased by amino acid sequence, and therefore can be used for detection of any phosphorylation event on any protein site. pIMAGO detection protocol resembles a simple Western Blot procedure and can be easily incorporated by any laboratory.

Results.

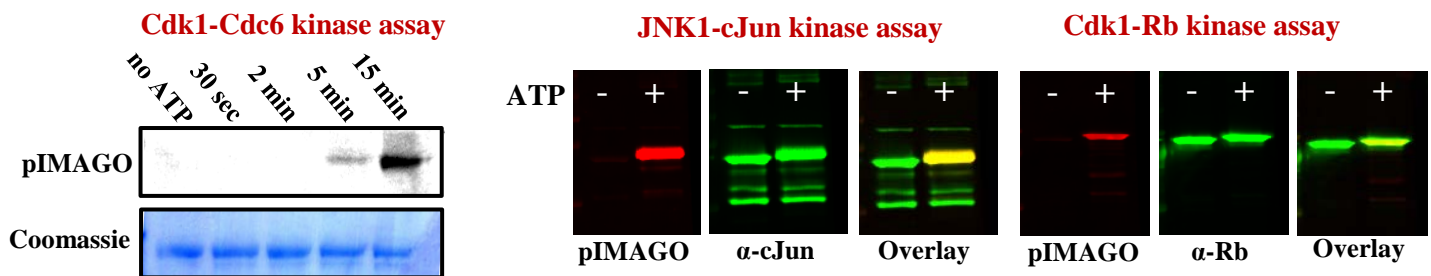
pIMAGO analysis of 6 protein mixture (2 phosphoproteins) avidin-HRP or avidin-Fluor detection.

Avidin-HRP detection

Avidin-Fluor680 detection



pIMAGO analysis of *in vitro* kinase assays using avidin-HRP (left) or avidin-Fluor (right) detection.



Kit components.

- ✓ 100µL of pIMAGO reagent
- ✓ 100µL of avidin-Fluor 680
- ✓ 500µL of 5x IAA
- ✓ 20mL of 10x Blocking buffer
- ✓ 20mL of 5x pIMAGO buffer
- ✓ 60mL of 10x Washing buffer
- ✓ 100µL of control phosphoprotein

Original citation.

Iliuk A., Liu XS., Xue L., Liu X., Tao WA. (2012).
 Chemical visualization of phosphoproteomes on membrane.
Molecular and Cellular Proteomics. **11**: 629-639.
 doi: 10.1074/mcp.O112.018010