

**pIMAGO®-biotin Phosphoprotein Detection Kit**  
**For Western Blot**  
**Fluor 550-based detection**



Store at 4°C

**Cat. # 801-40**  
**1 Kit**  
**(40 mini-blot)**

**Orders:** ► [order@tymora-analytical.com](mailto:order@tymora-analytical.com)  
**Support:** ► [customersupport@tymora-analytical.com](mailto:customersupport@tymora-analytical.com)  
**765-490-6834**  
**Web:** ► [www.tymora-analytical.com](http://www.tymora-analytical.com)

This product is for *in vitro* research use only and is not intended for use in humans or animals.

**Introduction.**

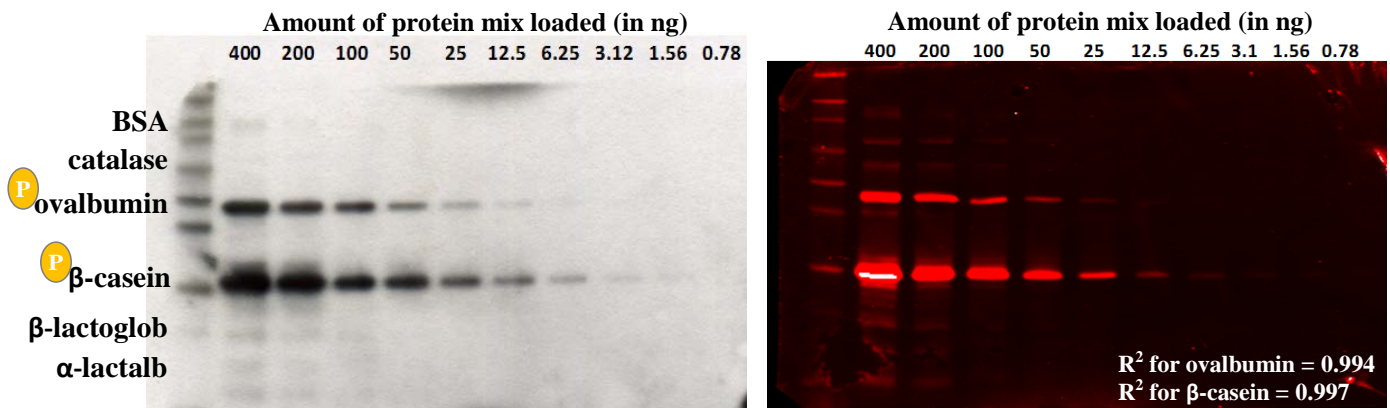
pIMAGO is a universal phosphoprotein detection technology that enables sensitive and specific recognition of phosphorylated molecules. Unlike phospho-antibodies, the binding is not biased by amino acid sequence, and therefore can be used for detection of any phosphorylation event on any protein site. pIMAGO detection protocol resembles a simple Western Blot procedure and can be easily incorporated by any laboratory.

**Results.**

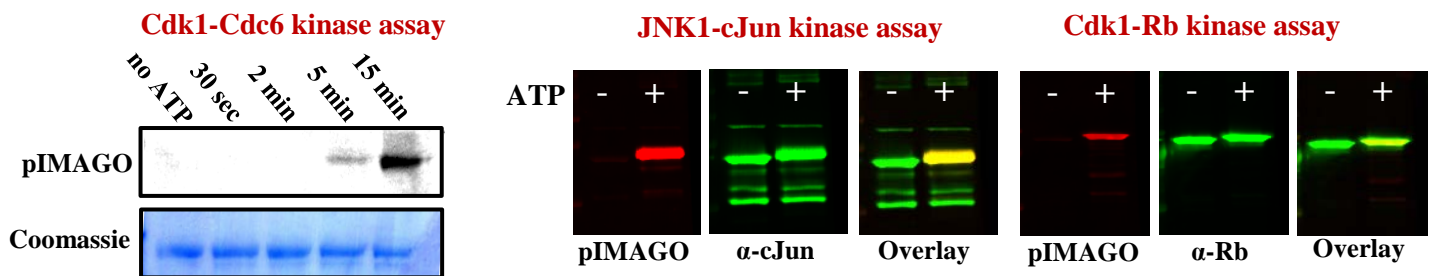
pIMAGO analysis of 6 protein mixture (2 phosphoproteins) avidin-HRP or avidin-Fluor detection.

**Avidin-HRP detection**

**Avidin-Fluor680 detection**



pIMAGO analysis of *in vitro* kinase assays using avidin-HRP (left) or avidin-Fluor (right) detection.



**Kit components.**

- ✓ 400µL of pIMAGO reagent
- ✓ 400µL of avidin-Fluor 550
- ✓ 2mL of 5x IAA
- ✓ 80mL of 10x Blocking buffer
- ✓ 80mL of 5x pIMAGO buffer
- ✓ 240mL of 10x Washing buffer
- ✓ 400µL of control phosphoprotein

**Original citation.**

Iliuk A., Liu XS., Xue L., Liu X., Tao WA. (2012).  
 Chemical visualization of phosphoproteomes on membrane.  
*Molecular and Cellular Proteomics*. **11**: 629-639.  
 doi: 10.1074/mcp.O112.018010